

BEEHIVE

INSPIRED BY NATURE



Inspired by nature's brilliantly strong shape, the hexagon.

The bee builds its bee hives using this shape purely because its strong structure requires the minimum of resources; here the shape of the wax is used to create this sound absorber and wall decor. Beehive acoustic tiles are perfect for the busy office atmosphere this strong dynamic design will expertly muffle red noise and allow everyone to work more efficiently in a bustling environment.

FIRE CERTIFICATES

Full fire testing has been performed and complies with safety regulation EN ISO 11925-2.

FABRIC CARE

If spills occur on fabric, ensure they are wiped away as soon as possible to prevent stains, refrain from using large amounts of water and from rubbing vigorously if possible as this could affect the overall finish of the surface.

ENVIRONMENTAL CERTIFICATIONS

ClassWall is committed to keeping the environment healthy and sustainable, this is proven by the ISO 14001 certification.

ClassWall Acoustic tiles are made of 65% recycled material and can be reprocessed again after use.

ACOUSTIC ABSORPTION

ClassWall Acoustic tiling is in compliance with acoustic standards:

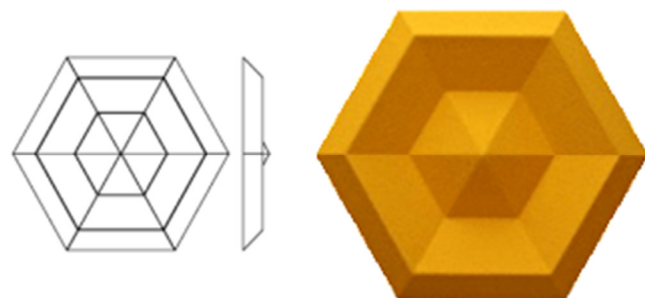
- ISO 345
- ISO 11654

SIZE

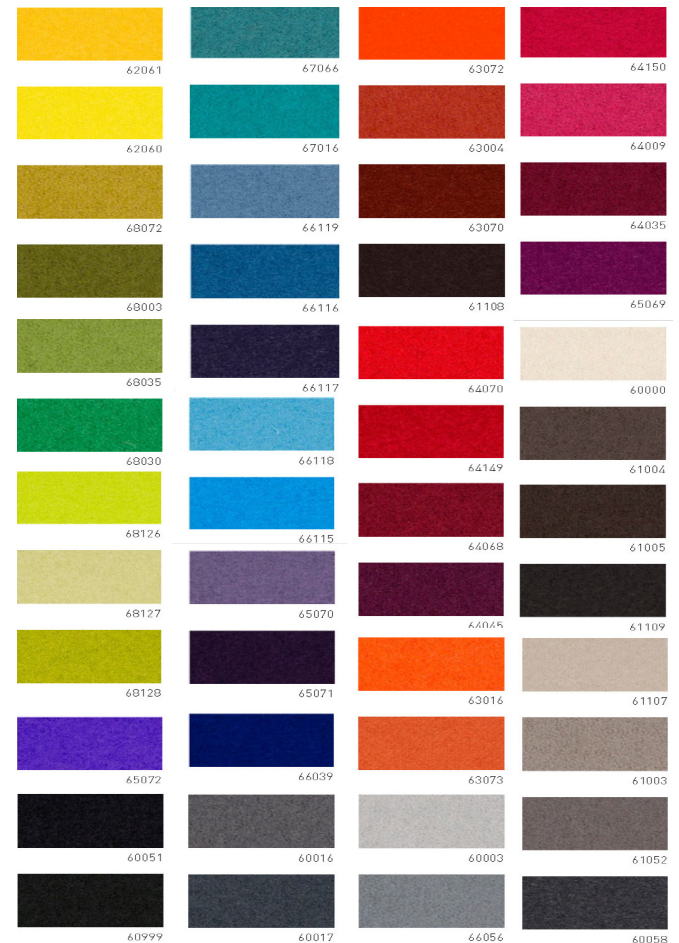
H: 560mm

W: 560mm

D: 65mm



EUROPOST COLOURS



BASE COLOURS

