

BEEHIVE RECTANGULAR

INSPIRED BY NATURE



Inspired by nature's most humbling creature.

The Bee builds its honey come using the hexagon shape purely because of its strength and resourcefulness, making the beehive rectangular acoustic tile perfect for putting in a well populated well organized area, its acoustic properties will allow for a more resourceful and structure working environment while adding extra character to your space.

FIRE CERTIFICATES

Full fire testing has been performed and complies with safety regulation EN ISO 11925-2.

FABRIC CARE

If spills occur on fabric, ensure they are wiped away as soon as possible to prevent stains, refrain from using large amounts of water and from rubbing vigorously if possible as this could affect the overall finish of the surface.

ENVIRONMENTAL CERTIFICATIONS

ClassWall is committed to keeping the environment healthy and sustainable, this is proven by the ISO 14001 certification.

ClassWall Acoustic tiles are made of 65% recycled material and can be reprocessed again after use.

ACOUSTIC ABSORPTION

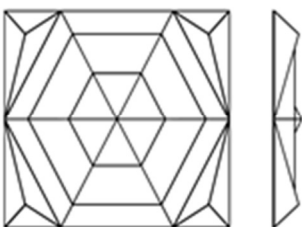
ClassWall Acoustic tiling is in compliance with acoustic standards:

- ISO 345
- ISO 11654

SIZE

H: 550mm

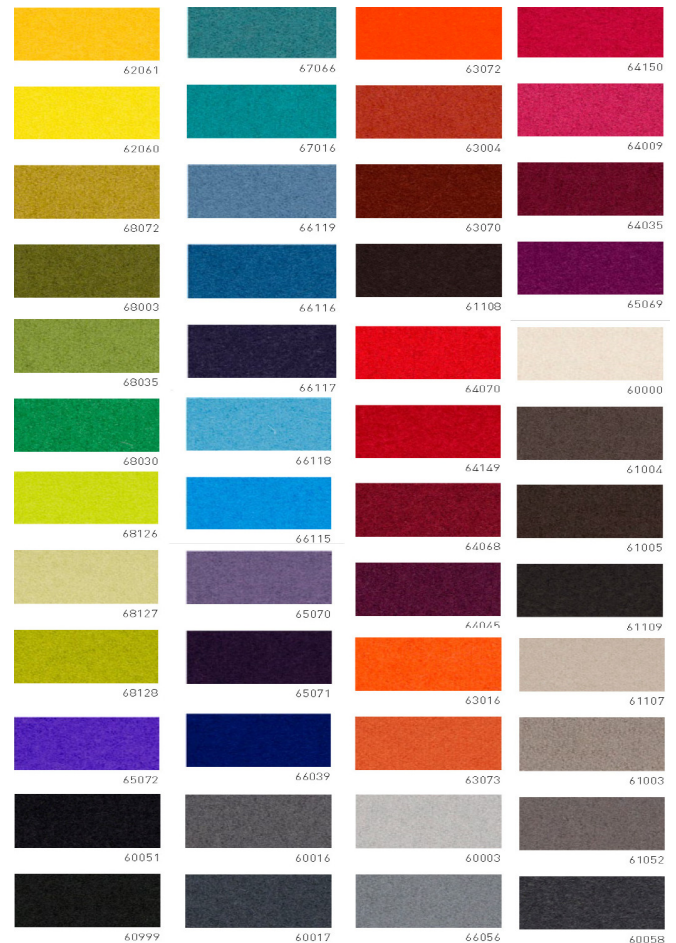
W: 475mm



D: 75mm



EUROPOST COLOURS



BASE COLOURS

